

SIXTH FORM STUDENT & PARENT HANDBOOK

A University Technical College (UTC) offering a unique STEM-focused education with specialist pathways in Business, Engineering and Health.



1.	Head of UTC Welcome, Leadership, Our Trust & Partnerships
2.	Curriculum, Assessment, Progression & Careers
3.	Sixth Form Agreement & Intervention Chart
4.	Business Dress
5.	Key Dates and Times
6.	Sixth Form Life & Wider Opportunities
7.	Travel
8.	Contact Details & Procedures, Communication & FAQ



Welcome to the Aston University Sixth Form Parent Handbook. The handbook contains essential information about us such as the school timetable, expectations, and links you will need to support and navigate students through their transition at Aston University Sixth Form.

Our unique approach ensures all our young people are equipped with the right skills and knowledge for a career in Business Engineering and Health at all levels. We combine exciting and innovative learning through our partnerships with industry, Aston University staff and facilities, and an ethos built around high expectations and high aspirations. This was evidenced in our Ofsted inspection in 2022, With the announcement of a demand for 1.8 million engineers and 3 million scientists by 2033, along with Business, Finance and Accounting rapidly increasing in demand across the West Midlands at both apprenticeship and graduate level, there has never been a better time to study at Aston University Engineering Academy. The key to our success is the close partnerships with parents and industry partners such as NHS, Royal Air Force and local construction companies. Evidence shows that students who receive four or more employer interactions are both five times more likely to secure a job and will earn nearly 20% more than those who have not had these employer experiences at school. At AUEA our students averaged over ten employer interactions last year alone, which included visits to the school by various businesses, overseas residentials and employer placements.

Aston University Sixth Form continues to grow its commitment to Birmingham's young people as a world-class centre for Engineering, Health, and Business. Recognised as a Centre of Excellence for vocational education and a flagship provider of the Government's Technical Level (T Level), we are now part of the Aston University STEM Education Academy Trust (AUSEAT) – a group of schools delivering outstanding STEM education across the West Midlands: Aston University Engineering Academy (AUEA) – Specialising in Engineering, Health, and Business for Year 9–11 students. Aston University Sixth Form Academy (AUSFA) – Offering A Levels, BTECs, and T Levels in Engineering, Health, and Business for learners aged 16–19. Aston University Goldsmiths Institute (AUGI) – Launched in 2024, providing Jewellery Manufacturing and Business Management courses for careers in the creative industry. Aston University Mathematics School (AUMS) – Opening in 2025, a specialist sixth form for gifted young mathematicians across the region.

As a result, our students will have more opportunities to excel and stand out than peers in other schools and colleges, especially with our expanding partnership with STEM industries. This is achieved through a bespoke curriculum, the Duke of Edinburgh Award and the uniformed cadet programme. One of the greatest sense of achievements in education is seeing the growth and development of our students and celebrating their success beyond their time at AUEA. I look forward to working with you over the upcoming years, and I am extremely proud that you have chosen to be part of this exciting journey.

David Chapman (Head of UTC)

As the Assistant Principal for Sixth Form, I am very proud of our Sixth Form students. The succession of our Year 13 progressing to University, apprenticeships or employment is exceptional. This is a testament to the quality of teaching alongside the numerous industrial and personal development opportunities our students receive; thus giving them a head start into their careers.



I am confident that our state-of-the-art facilities in business, science, and engineering, combined with both BTEC and A Level STEM pathways, provide students with personalised routes to achieve their ambitions. Furthermore, our strong industry links are a defining feature of what makes Aston University Sixth Form unique. Students benefit from a wide range of opportunities to engage with partners such as Jacobs, Collins Aerospace, the RAF, Aston University, and many others.

Our motto in the sixth form is **'Make Yourself Different'** because we realise academic excellence as well as wider enrichment activities which are required to secure outstanding destinations. We expect all of our students to participate in enrichment activities such as projects, sports and STEM competitions. Not only do these activities help to mould our students into well rounded citizens; but also encourage a sense of pride and belonging within the Sixth Form.

Finally, Aston University Sixth Form and myself are committed to supporting every student that pursues their studies with us and I am confident that together we will nurture our students into becoming highly successful STEM professionals. I look forward to working with you in the next academic year.

Cathy Bedney (Assistant Principal Sixth Form)

MISSION STATEMENT

AUEA Mission Statement

Aston University Engineering Academy will be nationally recognised as a centre of excellence in providing the very best engineering and technical education for successful and rewarding careers. In order that we as a community develop and achieve our aim of becoming a world class centre of excellence in engineering and science we must continually strive to do the following:

- 1) Working in partnership with our students, their parents, the University, regional and national employers, the professional bodies, local schools and the community.
- 2) Having high aspirations and expectations of our staff and students in both professional and personal development.
- 3) Fostering values that equip students for success.
- 4) Providing every student with an industrial sponsor, a university student mentor and a personalised pathway through and beyond the Academy.
- 5) Creating an inspirational learning community within which everyone is empowered to be a learner, a teacher and a leader.
- 6) Developing and delivering a challenging and innovative employer led curriculum that is applied and focused on the industrial and business world to prepare students for employment, apprenticeships or higher education.
- 7) Involving staff and students in the continuous improvement of life in the Academy, through reflection, research and publication of practice.

KNOWLEDGE
FOR LIFE
SKILLS FOR
THE FUTURE

AUEA Learning Ethos

Students are **taught** from day one to be effective learners and all lessons are constructed to drive our Learning Outputs so that everyone is a:

- > Learner
- > Leader
- > Teacher
- > Entrepreneur
- > Employee
- > Global citizen
- > Engineer

The ethos for our learning community is built upon our core values (7 R's) of:

- > Resilience
- > Resourcefulness
- > Reflectiveness
- > Reciprocity
- > Role Model
- > Readiness
- > Respectfulness



AUEA LEADERSHIP

The Executive Principal has overall responsibility for the strategic leadership and operation of the Trust. The Head of the UTC has responsibility for the day-to-day management of the UTC, in line with AUEA policies and Governors. The Principal and Head of UTC support the Senior leadership team to monitor and lead AUEA development. The combined leadership is central to driving whole-school improvement and raising educational standards. Our staff are committed to ensuring that AUEA provides a safe, ambitious, and high-performing learning environment for all students.



Daniel Locke-Wheaton
Executive Principal
principalpa@auea.co.uk



Professor Osama Khan
Chair of Governors
osama.khan@aston.ac.uk



David Chapman
Head of UTC
david.chapman@auea.co.uk



Ben Stone
Chief Financial Officer
ben.stone@auea.co.uk



Ruth Acton
Assistant Principal
Pre-16 Learner Progress,
Development and Wellbeing
ruth.acton@auea.co.uk



Cathy Bedney
Assistant Principal
Post 16
cathy.bedney@auea.co.uk



Francesca Matthews-Pipe
Assistant Principal
Curriculum, Examinations,
& Vocational Assessment
francesca.matthews@auea.co.uk



Dr Sukhvinder Ubhi
Assistant Principal
Teaching & Learning
sukhvinder.ubhi@auea.co.uk



Rachel Grant
SENDCo Designate
rachael.grant@auea.co.uk



Helen Walklett
Admissions and
Marketing Manager
helen.walklett@auea.co.uk

OUR TRUST

Why Aston University sponsors AUEA?



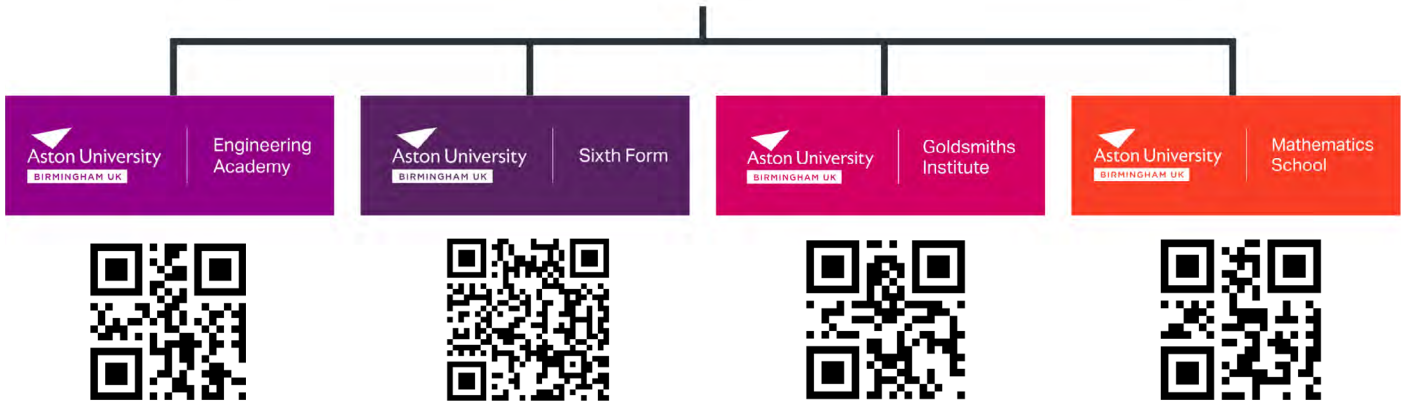
Aston University was the obvious choice for the first University Technical College back in 2010 and this allowed for the opening of Aston University Engineering Academy (AUEA) in 2012. The success of AUEA, especially with the high numbers and calibre of students graduating onto undergraduate and apprenticeships in Engineering and Science, resulted in AUEA's sixth form being renamed Aston University Sixth Form in 2016.

We are immensely proud of being Aston University's Engineering Academy. As part of this continued development, we have now joined a trust school: uniting a range of schools to deliver outstanding education across the West Midlands. To find out more about our trust, please visit www.auseat.co.uk

Aston University STEM Education Academy Trust (AUSEAT)



Aston University STEM Education Academy Trust (AUSEAT) brings together a family of Schools that are committed to delivering world-class STEM education across the West Midlands. The Trust aims to equip young people with the skills, knowledge, and opportunities needed to succeed in high-demand sectors such as Business, Health, Engineering, and the creative industries.



Birmingham's University Technical College

Aston University Engineering Academy is part of Birmingham's University Technical College (UTC). As a UTC we deliver an innovative, high-quality education that combines technical, practical, and academic learning. In doing so, we offer our students more than the traditional A Level curriculum.



This makes our students more attractive to universities and apprenticeships and explains why our destination data is outstanding. By integrating three types of learning – technical, practical, and academic – UTCs create an environment where all students can find their strengths and specialise in subjects that interest and engage them.

As part of their study, students participate in projects with the UTC's employer partners in real working environments, where they can apply their technical skills and creative thinking.

OUR PARTNERSHIPS

Aston University Sixth Form is partnered with many employers some include:



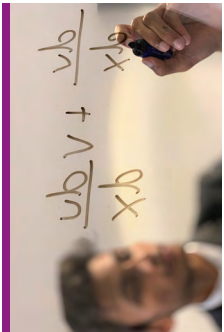
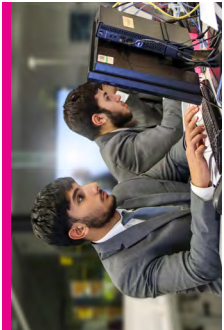
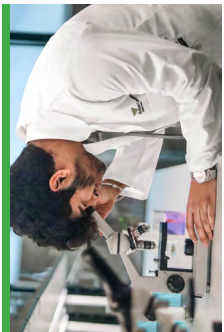
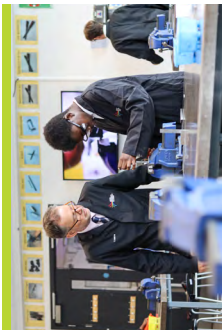

AUEA 2 Lister - Centre of Excellence for Post 16

In August 2024, AUEA were awarded the former National College of Advanced Transport and Infrastructure building in recognition of the growth in AUEA student numbers and expansion of the Post 16 curriculum with the onset of Technical Level Qualifications. The building will also be home to Birmingham's first Mathematics School named, Aston University Mathematics School and it is also home to Aston University Goldsmiths Institute as part of our link with Jewellery Quarter. This transformative initiative, developed with support from the Goldsmiths' Centre in London, is set to redefine education by integrating specialised skills and design training from UTC Foundation Year 9 through Sixth Form.

Given the size of the building and its location to AUEA, No 2 Lister Street will be a Centre of Excellence for Post 16 Education. Facilities will include a modern manufacturing centre, optometry lab, medical ward and state of the art meeting and teaching rooms to accommodate the needs of the students, employers, and the local and UK demand for STEM graduates.



CURRICULUM

PATHWAY					
	ELITE	ACADEMIC	ELITE PROFESSIONAL	PROFESSIONAL	T-LEVELS
	CHOICE OF 4 A LEVELS	A Level Mathematics Business Studies Economics Biology Chemistry Physics Psychology English Literature Further Mathematics* Art and Design Product Design	BTEC Level 3 Extended Diploma** in Business	BTEC Level 3 Extended Diploma** in Business (RQF)	BUSINESS Accounting Finance Legal Studies
	NEW	Aerospace Mechanical (T Level) with A Level Maths	BTEC Level 3 Extended Diploma** in Applied Science (Biomedical Science)	BTEC Level 3 Extended Diploma** in Applied Science (Biomedical Science RQF)	HEALTH Adult Nursing Paediatric Nursing Midwifery Optometry
OPTIONS	Extended Project (EPQ)	Extended Project (EPQ)	Extended Project (EPQ)***	Extended Project (EPQ)***	ENGINEERING Civil Engineering Surveying and Design Mechanical Aerospace Mechanical Electrical and Electronic Machining Jewellery
	Oxford / Cambridge Exam Medicine & Dentistry Early Entry	Oxford / Cambridge Exam Medicine & Dentistry Early Entry	Optional choice of 1 A Level****	Optional Core Mathematics Level 3 mathematical studies	Optional Core Mathematics Level 3 mathematical studies
ENTRY	Min. Grade 5 GCSE Maths & English A Level Maths requires Grade 7+ Further Maths requires Grade 8+ GCSE Average* Point = 7+	Min. Grade 5 GCSE Maths & English A Level Maths, Physics & Chemistry requires Grade 7+ GCSE Average* Point = 6.5+	Min. Grade 5 GCSE Maths & English A Level Maths, Physics & Chemistry requires Grade 7+ GCSE Average* Point = 6.5+	Minimum Grade 5 GCSE Maths Minimum Grade 4 GCSE English GCSE Average* Point = 4.8+	Minimum Grade 5 GCSE Maths Minimum Grade 5 GCSE English GCSE Average* Point = 5.5+

Disclaimer: Some courses may change, and additional courses may be introduced. Please check our website for updates.

*GCSE Average Point Score = Based on 8 subjects including GCSE Mathematics and GCSE English | **BTEC Level 3 National Extended Diploma (e.g. D*D*DP) = 3 A Levels (e.g. A*A*A*)

BTEC+L3 Maths+EPQ = Eligible for Technical Baccalaureate | *Limited choice of A Level subjects | *****Successful completion of Diploma option of a further year of study to upgrade to Extended Diploma

ASSESSMENTS

Assessment is fundamental to supporting students’ progress and attainment. At Aston University Sixth Form a wide range of assessment tools are used to set targets, monitor progress and track the achievement of our students. Efficient, up-to-date and accessible online reporting systems allow all staff in the Academy to work with accurate information about individual students to help them achieve and make rapid progress.

Target Setting

We will use average GCSE scores to assess the ability of Year 12 students. These scores determine the most appropriate curriculum pathway. Aston University Sixth Form is an Alps Connect member. Alps uses GCSE scores to set aspirational targets and track progress against national benchmarks.

Target

This is the minimum grade a student should achieve in each subject by the end of the course. It has been calculated from GCSE grades achieved.

Assessing Progress

Teachers will use a whole range of strategies to assess students’ learning each lesson. Self, peer and teacher assessment will be used along with formal assessment activities and tests. The results from these will be recorded electronically, providing ‘real-time’ data about student performance across the Academy. Progress in professional and technical programmes is monitored through regularly updated Progress trackers so students and their parents know what elements have been achieved and what is still to do.

Examination

Students on A Level courses will complete end of year examinations in June / July of Year 12. Formal mock examinations in December and March of Year 13 ensure they are fully prepared for their A Levels, BTEC, and T Level students sit their exams at different points throughout the year. Students who do not make expected progress on A Level courses may be offered alternative pathways. Progression to Year 13 is dependent on successful completion of Year 12 academic, vocational and technical programmes.

Expected Grades

At regular intervals students’ progress data across the Academy is analysed. Teachers use this data to predicted the grade each student is likely to achieve at the end of their course. This grade is referred to as their ‘Expected Grade’ and is updated termly.

Assessing Effort

National evidence shows that, coupled with good teaching, academic progress is directly related to the amount of work a student does. For this reason we assess their effort in each subject each term.

Effort leads to progress when:

- Students arrive on time for lessons with the correct equipment.
- They are fully engaged in the lesson, actively participating.
- Homework and independent learning tasks are always complete and on time.
- They go beyond expectations, respond positively to feedback by correcting mistakes and extending their learning.
- They don’t give up.

3. Low effort / High progress	1. High effort / High progress
4. Low effort / Low progress	2. High effort / Low progress

All students should aim for the green ‘High effort / High progress’ quadrant.

Students identified in the red ‘Low effort / Low progress’ quadrant are at very high risk of underachieving and parents should expect communication from subject areas in this situation.

PROGRESSION

University Aspirations

Aston University Sixth Form works hard to ensure their students are educated into making informed decisions about their future pathway at Higher Education and Apprenticeships. To help inspire them, visits, workshops and residential opportunities are organised for students throughout their time in the sixth form.

As well as our close partnerships with Aston University, University of Birmingham, Birmingham City University, and Coventry University, we explore offers across the UK, including at the leading Oxford and Cambridge universities.

Selected Students are given the opportunity to attend a taster day at the University of Oxford. Students get to experience the Oxford “way of life” as well as meet lecturers and current university students. This is an excellent opportunity which really inspires our students. This is an excellent opportunity for our students to get a taste of Higher Education and inspire them to achieve their aspirations.



Pathways to the Professions

We are proud and very privileged to work so closely with Aston University on their outreach programmes, Pathways to their Professions. These programmes have been designed to expand knowledge, develop skills, and inspire students to pursue pathways within the STEM industry.

The 18 month programmes are run alongside their Level 3 pathways and include activities such as taster days, academic tutoring, UCAS support, and a summer residential. Students who fully complete the 18 month course will be eligible for a pathway contextual offer and a chance to apply for a scholarship worth £5,000.



Pathway to Healthcare & Medicine

Students who are interested in a career in Healthcare or Medicine industry are encouraged to apply for the Wesleyan Pathways Programmes at Aston University.

As with the Pathways to the Professions Programmes, the 18 month programmes in Healthcare and Medicine are designed to equip students for a potential career in the industry.

UCAS

Aston University Sixth Form has an experienced and dedicated team to support each student with their UCAS progress. The preparation begins in Year 12 leading through to the final process in September of Year 13.

Students applying to either Oxford or Cambridge also get additional support which includes entry exam support as well as mock interviews and feedback.

Apprenticeships

All students are introduced to the different apprenticeship options and pathways throughout their time at the UTC. Students meet with current apprentices and employers, attend talks and specialist apprenticeship fairs.

A significant amount of our students achieve prestigious Degree Apprenticeship opportunities due to the additional employer-project led approach of a UTC. Over recent years this has included apprenticeships at Dyson, JLR and Rolls-Royce.



By scanning the QR code, you can discover where former AUEA students are on their journey after completing AUEA.

CAREERS

Career opportunities

These examples represent just a fraction of the vast array of STEM careers available to you after completing higher education or apprenticeships. As technology advances and new discoveries are made, new opportunities continue to emerge.

Business:

- Accountant
- Operations Manager
- Entrepreneur
- Business Analyst
- Investment Banker
- Social Media Manager
- Marketing Manager
- Sales Manager
- Financial Planner
- Brand Manager
- Auditor
- Digital Marketer

Health/ Science:

- Chemist
- Marine Biologist
- Microbiologist
- Nurse
- Laboratory Scientist
- Physical Therapist
- Genetic counsellor
- Optometrist
- Physicist
- Geneticist
- Midwife
- Pharmacist
- Astronomer
- Doctor
- Neurologist
- Dentist

Technology:

- Computer Scientist
- Cybersecurity
- Web Developer
- Systems Analyst
- Mobile App Developer
- Robotics Engineer
- Software Developer
- Network Administrator
- Game Developer
- Blockchain Developer

Engineering:

- Aerospace Engineer
- Chemical Engineer
- Electrical Engineer
- Mechanical Engineer
- Software Engineer
- Structural Engineer
- Biomedical Engineer
- Civil Engineer
- Industrial Engineer
- Nuclear Engineer
- Automotive Engineer
- Mechatronics Engineer

Mathematics:

- Statistician
- Quantitative Analyst
- Financial Analyst
- Mathematics Teacher
- Mathematical Researcher
- Data Analyst
- Research Analyst
- Mathematician
- Data Scientist
- Accountant

Gatsby Benchmarks

Careers Education Information Advice & Guidance (CEIAG) is important in order to assist AUEA students to be ready for the world of work. At present AUEA students engage in a careers programme which includes advice and guidance throughout the year. Students engage in a wide range of activities such as:

- Meaningful work experience
- Curriculum based visits to industry
- Enhanced placements
- Contextualised learning within the curriculum
- STEM project and competitions
- Combined Cadet Force
- Apprenticeship show
- One to one meetings with Careers Advisors

In January 2018 the Government introduced the Careers Strategy which requires all schools to meet a minimum standard of careers education. AUEA have been exceeding that standard for a number of years and will continue to do so. AUEA sit on the Careers & Enterprise Headteacher Forum, representing Birmingham schools and are working closely with our Industry Advisory Board and an industry expert to ensure AUEA continues to provide appropriate careers education.

In 2013 the Gatsby Foundation commissioned Sir John Holman to come up with measures to improve careers guidance. That became the Gatsby Benchmarks; a series of 8 standards that have been adopted by the Governments Careers Strategy to help schools deliver good careers education.

The eight Gatsby benchmarks of Good Career Guidance are:

1. A stable careers programme
2. Learning from career and labour market information
3. Addressing the needs of each pupil
4. Linking curriculum learning to careers
5. Encounters with employers and employees
6. Experiences of workplaces
7. Encounters with further and higher education
8. Personal guidance

AUEA reviews progress through the 8 standards every half term to ensure compliance and to suggest where improvements can be made. That is then scrutinised by our industry expert.

UTC Hub are continuing to develop their system to include the Gatsby benchmarks so that students can self-track and upload evidence of their careers Education at AUEA to help them with UCAS Applications and applications for future roles.

All students at Aston University Sixth Form must sign our Sixth Form Expectations Agreement. This agreement acts as a contract to study at our Sixth Form and clearly states our policies and guidelines. Failure to adhere to the contract may result in a review of their place at the Sixth Form.

Sixth Form Attendance Policy

It is a key aim of the Sixth Form that all students should have 100% attendance in order to maximise their educational experiences and attainment, therefore sixth form students will be required to attend all timetabled lessons, intervention sessions, tutorials and Personal Development Group periods. Excellent attendance results in excellent progress, therefore students will risk losing their place if they continuously fail to meet attendance expectations set out in the Student Agreement. For further information, please refer to the 'Sixth Form Intervention Chart'. It is not guaranteed that all absences will be authorised. Where the reason for absence could not be foreseen, Aston University Sixth Form will consider whether the absence should be authorised.

Progress V Attendance

Grade	Attendance
A*	95.5%
A	94.6%
B	93.0%
C	91.4%
D	89.6%
E	87.7%
U	84.4%

The table above highlights the amount of student progress that is expected dependant on student attendance. It is vital that students attend every lesson, everyday, to ensure they are giving themselves the best opportunity to be successful.



An absence which could not have been notified in advance should be notified to the academy on the day in question; this should be done by a phone call to AUEA reception by 9am on the day of absence. If absence is due to illness, parents should give brief details of the absence and continue to ring on the day. On return to sixth form, a discussion regarding the absence will take place with their tutor and any other information will be passed on to the Assistant Principal of Sixth Form. **Please note - No Holidays will be authorised in term time.** For more information, please refer to the AUSEAT post 16 Attendance Policy on www.auseat.co.uk

Punctuality

Punctuality is not only one of the keys to success at Aston University Sixth Form but is also a key employability skill for future careers. Students whose punctuality is identified as a persistent issue by their tutor and/or subject teacher will be sanctioned in accordance to the Sixth Form Intervention Chart.

Independent Study

All students will be allocated Independent Study periods on their timetables. These periods are given to students to complete study tasks, revision and assignments; therefore there is no excuse for missed deadlines and poor preparation. There are different forms of independent study – unsupervised, supervised, and compulsory. During these sessions, students are expected to work in study areas and demonstrate a readiness to learn. There is no such thing as a free period!

Conduct

Sixth Form students are expected to be role models in and around the Academy, which also includes Aston University Campus. Students need to be aware of the following:

- Smoking and/or e-cigarettes are not allowed on site including Aston University Campus.
- Student **MUST** wear full business dress to and from Aston University Sixth Form (including Aston University Campus), as well as onsite.
- No trainers should be worn.
- Students will adhere to the ICT acceptable user policy
- Mobile phones for Sixth Form students are only permitted for learning purposes and can be used in designated areas. Mobile phones are not allowed during lessons and should be on silent and not seen.

Rewards and Consequences

Throughout your time at Aston University Sixth Form, many opportunities will be offered to you, such as industry trips, work experience, university workshops and summer schools. Many of these trips are organised as rewards for students who are achieving or exceeding their subject and/or tutor targets. Students are advised to engage in as many relative opportunities to help boost their personal statements for university or employment.

Students who fail to meet the expectations of sixth form will be issued with consequences in accordance with the Sixth Form Intervention Chart. In brief, students will be given warnings that reflect the issue and will be decided by the Assistant Principal Sixth Form and finalised by the Principal.

Contribution to Sixth Form Life

Sixth form students are in a position to set an example to younger students, and to guide and mentor our Year 9, 10 and 11 students through their GCSE years. Students should acquire and demonstrate positive personal and employability skills wherever possible.

Sixth form students will be given the opportunity to apply for a position on the Student Leadership Team and will assist the responsibilities of the Head Students.

It is imperative for students to enrich themselves in activities within sixth form and the wider community to ensure they are holistically experienced. Some universities and employers identify this area as just as important as the academics and is called "super curricular". We will provide you with many opportunities to undertake enrichment such as Duke of Edinburgh, Field Gun Challenge, AUEA Talent Show and playing in sports teams.

Personal Development sessions will become imperative to your success at Aston University Sixth Form, ensuring adequate progress is being made, important messages are being communicated and personalised student references are written.



SIXTH FORM AGREEMENT

INTERVENTION CHART

Study

- Students should fully prepare for the formal internal assessments (milestones) to ensure progression is made throughout the year.
- Students should devote at least 5 hours of time each week to the independent study of each subject. This will include consolidation of work done in class and wider reading or research.
- Ensure that any work/assignment set is completed on time in agreement with the subject teacher. Failure to meet deadlines will result in formal warnings issued in accordance to the Sixth Form Intervention Chart.
- Students should participate in all compulsory activities specifically arranged for sixth form students.
- Undertake no more than 10 hours per week paid employment during term time. Your place at Sixth Form should be seen as your 'main job'.
- Students should maintain work books/ folders in line with Sixth Form and Curriculum area expectations.

Progression

All Year 12 students will continue with all of their subjects up until the end of the academic year. At this point a final progress and attendance analysis will be carried out and some student pathways may be reviewed. Once all examinations and assignment work have been completed, Year 12 students will undertake a Personal Development curriculum where activities such as transition work, work experience and University visits can be carried out.

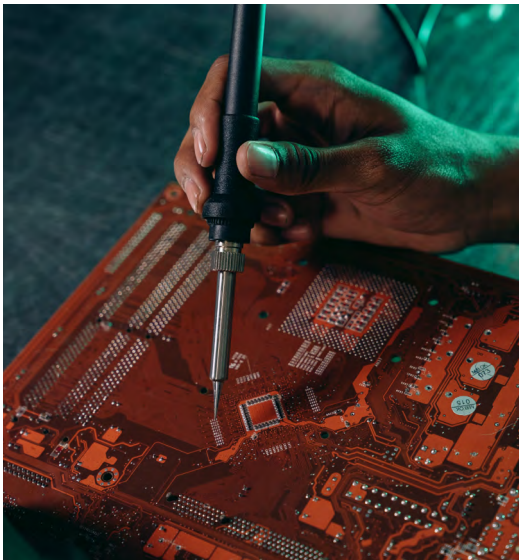
Entrance onto any sixth form course is dependent on meeting the minimum entry requirements as specified in the course booklet.

Progression into Year 13 is as follows:

- All A Level subjects are now linear courses, therefore, the results of the Year 13 Entry Exam will determine entrance into Year 13.
- You can progress to study 3 A Level courses in your second year if you successfully complete each of those three subjects in your first year and you have a good record of behaviour, effort, punctuality and attendance.
- If you do not meet the requirements of the course in Year 12, it is poor advice and guidance to progress into Year 13 and instead additional options of re-sitting qualifications / years will be offered if within the student age limit.
- If you are on a BTEC programme, for progression into Year 13 students must have completed (and passed) all Year 12 assignments and have consistently met the requirements of the BTEC programme. Please refer to the BTEC Handbook on Firefly for more information.
- If you have a poor record of punctuality and / or attendance and/ or behaviour you may not be allowed to continue into the second year.
- If your attendance falls below 85% your place at Aston University may be terminated with immediate effect.

Parental progress communication

Progress reports are accessible through the "My Child At School" platform and are updated every half term. Parents will also have opportunities to book progress appointments at designated times during the academic year. Where students are identified as underperforming, individual meetings will be arranged throughout the year to provide additional support. Our partnership with parents is essential to ensuring that students achieve their full potential whilst at Aston University Sixth Form.



Positive Behaviours and 7R's

Initial Poor Conduct

Logged on Bromcom.
Teacher/student conversation.

Repeated Poor Conduct

Logged on MIS system, subject teacher phones home, inform tutor to monitor overall conduct, Issued detention.

Continued poor Conduct/Progress

Subject Leader intervention meeting with parent and student.
Issued tutor report.

Persistent Poor Conduct/Progress

1st Warning Letter issued by Pastoral Leader and Parental Meeting
Pastoral Leader report.

Failure To Meet Expectations

2nd Warning Letter by Assistant Principal
Parent AP Meeting.

Continued Failure To Meet Expectations

Final Warning Letter Issued by Principal,
Parental Meeting with Principal, Possible suspensions.

Continued Failure To Meet Expectations

Referral to Ex. Principal, possible Permanent Exclusion*

Good Attendance (95% plus)

Initial Poor Absence Or Punctuality

Subject Teacher conversation, inform Tutor to monitor.

Repeated Poor Conduct

Subject Teacher informs pastoral leaders, and issued detention.

Repeated Poor Absence/Punctuality (92% below)

Attendance report, call home by Subject Leader & tutor and issued detention.

Persistent Absence (90% below)

1st Warning Letter issued by Pastoral Leader, Issued PL Report & Parent Meeting.

Continued Persistent Absence (87% below)

2nd Warning Letter Issued by AP, Issued Report & Parent AP Meeting.

Severe Absent Expectations (85% below)

Final Warning Letter Issued by Principal, Parental Meeting with Principal.

Continued Failure To Meet Expectations (85% Below)

Referral to Ex. Principal, possible Permanent Exclusion*

Persistent & Severe absence is likely to be detrimental to the student's educational prospects and is viewed as failing to adhere to the provisions acceptable behaviour guidelines and can lead to permanent exclusion.

Under section 9 (3) Attendance Regulations 2024: A pupil not of compulsory school age can be deleted from the admission register if the school does not have reasonable grounds to believe the pupil will attend the school again; or where the pupil has been continuously absent from the school for at least twenty school days

INTERVENTION ZONE

CONSEQUENCE ZONE

PASTORAL TEAM

Students at AUEA are divided into four Colleges. Supported by a pastoral team with responsibility for the development of learners within the Colleges. These support the ethos of AUEA by grouping students into teams. The College structure supports Personal Development, assemblies, student leadership and competition. The Colleges are as follows:

HOUNSFIELD

He was an English electrical engineer who shared the 1979 Nobel Prize for Physiology or Medicine with Allan McLeod Cormack for his part in developing the diagnostic technique of X-ray computed tomography. His name is immortalised in the Hounsfield scale, a quantitative measure of radio density used in evaluating CT scans.

SHILLING

A pioneering female engineer with connections to Birmingham, working at the University of Birmingham prior to her aerospace career. She developed a technical innovation for Rolls-Royce on aircraft engines. Her groundbreaking work contributed to the performance of the jet engine, and she later became one of the first women to be elected a Fellow of the Royal Academy of Engineering.

LANCHESTER

Brothers who first developed a car in 1895 and it was on the road by 1896. It was designed as a car and not a 'horseless carriage'. The first cars sold to the public in 1901. Their successor was Daimler and Jaguar. Their contribution has been celebrated with a statue of the car in the Heartlands area, on Bloomsbury Street.

WHITTLE

He is credited with independently inventing the turbojet engine (some years earlier than Germany's Dr Hans von Ohain) and is generally hailed as the father of jet propulsion. His pioneering design laid the foundation for modern jet engines, revolutionising air travel. Whittle's early work was instrumental in Britain's development of high-speed aircraft during the Second World War.

Contact Information

Pastoral Team

To reach the college team by phone dial
0121 380 0570 option 3

Miss C Bedney - Assistant Principal Sixth Form
cathy.bedney@auea.co.uk

Mrs S Carlin - Senior College Leader Sixth Form
sally.carlin@auea.co.uk

Mr T Sweet - Sixth Form College Leader
thomas.sweet@auea.co.uk

Miss S Cornwall - Sixth Form College Leader
shian.cornwall@auea.co.uk

Mrs L Rendall - Learning Resource Hub Manager
& Student Mentor
lynette.rendall@auea.co.uk

SEND Team

To reach the SEND team and SENDCo by phone dial
0121 559 0290

Mrs R Grant - SENDCo Designate
rachael.grant@auea.co.uk

Mrs L Sibley - Assistant SENDCo
senteam@auea.co.uk

Mr M Choudhury - SEND Team
senteam@auea.co.uk

Counsellors

To reach the counsellor by phone dial
0121 380 1549

BUSINESS DRESS

Our Sixth Form dress is business wear, with the suit matching what would be seen in professional businesses, as well as being affordable, and of high quality.

Students may purchase a suit from our supplier Clive Mark or purchase a plain Charcoal Grey suit from the high street or online retailers.

Aston University Sixth Form's policy on business dress is based on the principles set out in the dress code as follows:

- Promotes a sense of pride in the Sixth Form in line with our ethos, values and beliefs
- Engages a sense of community and belonging in the Sixth Form
- Supports positive behaviour and discipline
- Is practical, smart and businesslike
- Identifies students within the Sixth Form
- Prevents students from coming in fashion or 'designer' labels that could be distracting in lessons or create a sense of competition
- Makes students feel equal to their peers in terms of appearance and helps nurture cohesion between different groups of students
- Is regarded as suitable for school and good value for money by most parents
- Is designed with health and safety and safeguarding in mind.
- Students who do not conform to the expectations can expect to be given a warning, or be sent home by the Assistant Principal Sixth Form if their business dress is unacceptable. This will be recorded as an unauthorised absence.

AUEA business dress is supplied by Birmingham company Clive Mark, with dedicated local stores in Kings Heath, Boldmere and Bearwood.

Purchasing of Business Dress can either occur at the store or online at:

www.clivemark.co.uk

We request that all Parents/Carers support our business dress policy and that they have a responsibility to send their children to Aston University Sixth Form correctly dressed and ready for their daily work.

If any Parent or Carer would like the Sixth Form to modify the business dress policy they should make representations in the first instance to the Principal. Aston University Sixth Form welcomes children from all backgrounds and faiths. If there are serious reasons, e.g. on religious grounds, why parents/carers want their child to wear clothes that differ from the approved business dress, we will look at such requests sympathetically. There is no guarantee that requests will be granted.



STORE ADDRESSES:

38-40 Poplar Road
Kings Heath
Birmingham
B14 7AD

11-13 Boldmere Road
Sutton Coldfield
B73 5UY

4-5 Three Shires Oak Road
Bearwood
Warley
B67 5AX

SIXTH FORM BUSINESS DRESS

- > Grey Business Suit - Jacket and Trousers or optional matching skirt (long or standard)
- > White Formal Shirt (long or short sleeves) or white blouse
- > Sixth Form Tie
- > Plain black or grey socks/opaque tights
- > Plain black robust business shoes, no sports logos
- > Please note that Jumpers are not permitted as part of the Business Dress

CLIVE MARK BUSINESS DRESS COSTS

Suit Jacket	From £41.99 - £49.99	Skirt (standard or long)	From £14.49-£18.99
Grey Trouser	From £18.99-£22.49	Sixth Form Tie	From £8.99
Blouse	From £23.49	Waistcoat (optional)	From £35.99

Trutex 2 Piece Suit Offer from £60.00 - Suit Jacket, Trouser or Skirt
Save More with £70 with a full Suit plus a Twin Pack Shirts/Blouses

T LEVEL STUDENT UNIFORM

Route Pathway	Business Dress	Workwear
Engineering	Grey Suit, White Shirt, Sixth Form Tie	Trousers workwear (Black) (£18.99) Workwear boots (Black) T Level Polo Shirt (Navy) (£10.49 -£12.49) Optional - Soft shell Blue Jacket (£30.99)
Nursing & Midwifery	Purple polo shirt (£10.49-£12.49) Grey trousers/ skirt	Scrubs Top (Purple) (£10.49) Scrubs Bottoms (Purple) (£15.49)
Optical Care Services	Grey Suit, White Shirt, Sixth Form Tie	Workshop Lab Coat (White) T Level Polo Shirt (Navy) (£10.49 -£12.49) Optional - Soft shell Blue Jacket (£30.99)
Business	Grey Suit, White Shirt, Sixth Form Tie	
Jewellery	Grey Suit, White Shirt, Sixth Form Tie	Workshop Lab Coat (Black) T Level Polo Shirt (Navy) (£10.49 -£12.49)

COMBINED CADET FORCE (CCF)

Students who participate in the CCF will be issued with a uniform based on their choice of RAF, Army, or Royal Navy. They are to maintain their uniform to a high standard and wear it on a Wednesday. Students must not travel to and from school in CCF uniform unless parents are dropping or picking them from the academy.

For CCF, there will be a subscription charge which will provide cadets with a standard Royal Air Force CCF Cadet uniform, and a customised polo shirt. The subscription also pays for the required insurance for all CCF activities. The CCF do not supply parade shoes or boots. These will need to be sourced by the cadet from suitable outlets such as Army Navy stores or via websites such as www.cadetdirect.com

Business Shoes

AUEA dress is business wear, with the suit designed to match what would be seen in professional businesses. The same applies to shoes. Shoes should be a plain black shoe, with no motif/logo, canvas or trainers.

This should be a black traditional leather/leather type shoe either laced or loafer or a strong, black, closed toe, flat or low solid heel shoe. No high heels (this is important as these cannot be worn in the workshops).

Please note that **NO TRAINERS** are allowed at AUEA apart from those carried in and worn in PE. **Students are not permitted to wear trainers/casual shoes to and from school**, unless riding a bike. We therefore request parents to support their child in purchasing the correct shoes from the outset in order to avoid potential issues. The images shown here are representative of the styles we expect.

Payments

At the beginning of the each academic year, a non-refundable resource fee is payable. The total outlay per year group for UTC Foundation Year 9 is £55, Year 10, 11 and 12 is £35.

At enrolment we request an initial payment towards the annual resource fee, for UTC Foundation Year students this is £20
***See Questions and Answers page for full Resource Fee breakdown**

Lockers

Each student will be equipped with their own locker, with combination lock.

I.D Cards

Your child will be equipped with an eCard, as well as I.D, which provides access to the building via the student entrance, electronic payment for food, and access to printing and photocopying machines. One replacement card per annum is included in the resource fee. Any further replacements are charged at an additional cost of £3.

Printing

Each student will be allocated printing credit of £15 per annum. Additional credit can be purchased if needed from the Finance Office.

Lanyard

Each student will be issued a lanyard which must be worn around the neck at all times. One replacement lanyard per annum is included in the resource fee. Any further replacements are charged at an additional cost of £2.



Shoes must look professional business style. They should be smart and black. Can be slip on, laced or low boot. Trainer Shoes/Hybrids are not allowed.

Equipment



Students are expected to be equipped with the necessary equipment for working as a young professional at AUEA. Each student will have their own locker for them to keep their equipment and sports kit in throughout the day. Replacement equipment can be purchased from the AUEA student shop.

Students writing /technical drawing equipment should be kept inside a pencil case. All students should also have a scientific calculator. The minimum requirements within your child's pencil case are:

- >Pens (Black, Blue, Red and Green)
- >Black fine line
- >Pencils (HB, 2H,)
- >Eraser (Standard rubber and putty rubber)
- >30cm Ruler
- >Pencil Sharpener
- >Protractor and Set square

Resource Fee Breakdown		
	Year 12	Year 13
Student Locker	Optional	Optional
Printing allowance	£20	£20
Student Card & Lanyard	£15*	£0
Engineering Safety Boots	Optional	
Safety Glasses	Optional	
Total outlay per annum per student	£35	
Payment required at enrolment (July/August)	£15	
Direct Debit Annual Payment September (1 form for parent to complete)	£20	£20

SIXTH FORM KEY TIMES

KEY DATES



Student week

DAY	START TIME	FINISH TIME
Monday	08:40	15:00
Tuesday	08:40	15:30
Wednesday	08:40	15:30
Thursday	08:40	15:30
Friday	08:40	14:30

Student day

AUEA building opens to students at 8:15am

Students must arrive at AUEA by 08:25 at the latest

ACTIVITY	TIME
Lesson 1	08:40 - 09:35
Lesson 2	09:35 - 10:30
Break	10:30 - 10:50
Personal Development	10:50 - 11:15
Lesson 3	11:15 - 12:10
Lunch	12:10 - 12:40
Lesson 4	12:40 - 13:35
Lesson 5	13:35 - 14:30*
Lesson 6	14:30 - 15:25

15:30 - 16:30 - Clubs and Intervention

Students must be off site:

16:45 - Monday - Thursday
16:00 - Friday

Term dates 2025 - 2026 Term dates

	TERM	START DATE	FINISH DATE
Autumn		Monday 1st September 2025*	Friday 24th October 2025*
	Half Term Holiday	Monday 27th October 2025	Friday 31st October 2025
		Monday 3rd November 2025	Friday 19th December 2025
	Christmas Holiday	Monday 22nd December 2025	Friday 2nd January 2026
Spring		Monday 5th January 2026*	Friday 13th February 2026
	Half Term Holiday	Monday 16th February 2026	Friday 20th February 2026
		Monday 23rd February 2026	Friday 27th March 2026
	Easter Holiday	Monday 30th March 2026	Friday 10th April 2026
Summer		Monday 13th April 2026	Friday 22nd May 2026
	Half Term Holiday	Monday 25th May 2026	Friday 29th May 2026
		Monday 1st June 2026	Friday 17th July 2026*

Important dates:

Wednesday 3rd September 2025 Year 12 Induction Day 1

Thursday 4th September 2025 Year 12 Induction Day 2
Year 9 Induction Day 1

Friday 5th September 2025 Year 12 Induction Day 3
Year 9 Induction Day 2

Monday 8th September 2025 All year groups in school

* Teacher training days and UTC Closures:

Monday 1st September 2025 Teacher Training Day
Tuesday 2nd September 2025 Teacher Training Day
Friday 24th October 2025 Teacher Training Day
Monday 5th January 2026 Teacher Training Day
Monday 9th February 2026 Teacher Training Day
Monday 4th May 2026 Bank Holiday
Monday 21st July 2026 Teacher Training Day
Tuesday 22nd July 2026 Teacher Training Day

* Please note, this is subject to change at any time.

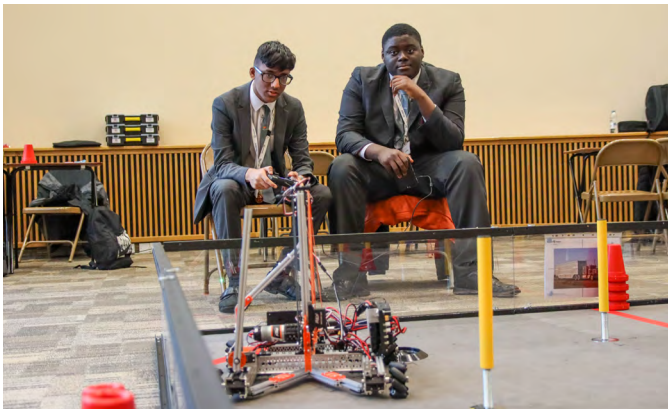


SIXTH FORM LIFE

Life at Aston University Sixth Form promotes independence, responsibility and respect. It is a thriving community with a strong feeling of togetherness and teamwork between students and teachers alike.

A reflection of this is the appointment of a Student Leadership Team led by our Head Students within the Sixth Form.

There are numerous opportunities for our students to develop their character and personal skills beside their academic journey. We offer a variety of programs, projects and opportunities for our students to take part in such as: Project Slingshot, CCF, Fusion 360 CAD, Bostin Dynamics robotics and NHS action research.



Duke of Edinburgh Award

Year 12 students have the chance to apply to join our outstanding DofE teams at Gold Level, regardless of previous experience with DofE. Led by wonderful staff and previous students, you will undertake expeditions in the Brecon Beacons and Dartmoor along with climbing trips, and completing Volunteering, Physical, Skill and Residential sections of the award.

See www.dofe.org for more information. It is hard work for Gold but the outcome is a prestigious award that makes your CV stand out.



Food at Aston University Sixth Form

Aston University Sixth Form understands the impact of a student's diet on their ability to learn effectively. With students travelling across the city, it is vital students have access to good quality, healthy food. Therefore Aston University Sixth Form has a professional catering team within a dedicated restaurant to meet each student's needs. We have a wide range of menus throughout the week.

Should you have any specific dietary requirements or food allergies we request that you notify Aston University Sixth Form at the earliest opportunity. Students are also able to bring sandwiches and packed lunches which are also to be eaten in the restaurant. **No takeaway food is allowed to be brought into any campus building.**

CLEVERCHEFS

Creative Minds



Sport at Aston University Sixth Form

Sport at Aston University Sixth Form reflects our innovative approach to the other areas of our curriculum. Working in partnership with Aston University's 'Sport Aston' ensures we have access to outstanding sports facilities from across the Aston University campus. Sport in enrichment time will therefore benefit from facilities which include astro turf pitches, swimming pool, sports halls, badminton and multi-gym.

Year 12 students will have the opportunity to use the facilities of Sport Aston once per week during enrichment time. Alternatively, students can join at the discounted student rate for full membership. Community / parent membership is also available. AUEA also has its own sports hall and multi-gym facility that Sixth Form students can use during their independent study periods. All sixth form students will have the opportunity to take part in the Sixth Form College Games representing their college in different events.



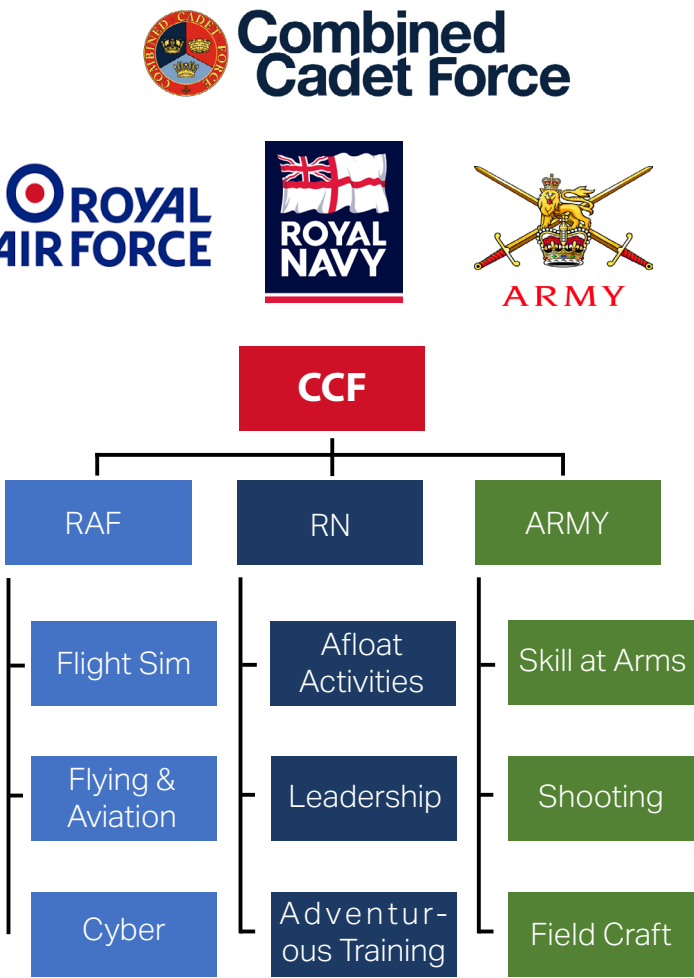
WIDER OPPORTUNITIES

AUEA's CCF was originally aligned to the RAF and consistently had over 100 CCF RAF cadets since 2017. As of March 2023, a Royal Navy Section was started and from September 2023 we became a Tri-Service CCF offering RAF, Army, and the Royal Navy; making us one of the largest CCF providers in the UK.

All UTC Foundation Year 9 students will choose the CCF (RAF, RN, Army) to be part of every Wednesday afternoon. Whilst each strand of the CCF have their own unique elements, every student will also take part in the Bronze Duke of Edinburgh Award.

The vision statement for the CCF is:

Prepare, engage and challenge cadets to be inspirational role models within the CCF and AUEA building respect, integrity and resilience, driving social mobility and progression towards life changing futures. This is achieved through specific training plans, adventurous training and by meeting the values of the RAF, RN and Army.



RAF	ARMY	RN
Respect	Courage	Commitment
Integrity	Discipline	Courage
Service	Respect for others	Discipline
Excellence	Integrity	Respect for others
	Loyalty	Integrity
	Self Commitment	Loyalty



TRAVEL

Birmingham's clean air zone



By car

Every year, air pollution contributes to the premature deaths of up to 1000 people in Birmingham through conditions such as cancer, heart and lung disease. To improve air quality within the city, Birmingham introduced a Category D Clean Air Zone in June 2021 and charge owners of the most polluting vehicles to drive within certain parts of the city centre.

Aston University Engineering Academy is just within the chargeable zone (charged at £8.00 per day).

You can check online if you vehicle is compliant:

Drive in a clean air zone - GOV.UK (www.gov.uk)

If your car is not compliant, you will be charged for dropping off or collecting your child from AUEA. Consequently, we recommend either using public transport or dropping your child safely, outside the Clean Air Zone, where safe crossings exist e.g. Lord Street. Parents should not drop students on the Ring road/Dartmouth Middleway directly.

Parking

Due to our Birmingham city centre location and to maximise the size of the building and facilities for our students, AUEA only has a small private car park. This has limited space for staff and visitors and therefore parents attending meetings with a member of staff should source alternative parking. However, if you require a disabled car parking space please contact AUEA Main Reception. There is alternative pay car parking nearby within 5 minutes' walk of our site. We also recommend that visitors use public transport wherever possible.

Aston University offer a limited amount of Pay and Display parking on a first come first served basis. This facility is in Car Park 5 which is located off **Holt Street, B7 4BH (within the clean air zone - charges apply if vehicle is not compliant)**

There is a pay and display machine located within the car park (coins only). Parking charges are £6 per visit. You can now pay by phone using the 'JustPark' system. See the Green and Black signs on the car park for full details.

Collecting your child

AUEA does not have a designated drop off point due to its location on the large Aston University Campus, therefore parents should always ensure students are dropped off in a suitable and safe location around the campus. The student entrance and exit is located on Love Lane and this is the safest place for drop off. **(Love Lane is located within the clean air zone - charges apply if vehicle is not compliant)**. Alternative locations are on either side of Aston Street and outside the Sack of Potatoes pub on Woodcock Street. This is by kind arrangement with the university, therefore, we request that parents are courteous to users when pulling over and that students conduct themselves to the highest standard when walking around campus.

Parents should not drop their child off on Lister Street immediately outside AUEA or at the pull in area of AUEA 2 located at 2 Lister Street (Opposite AUEA building).

By bus

Over a hundred buses pass within 5 minutes of AUEA. To get the latest up to date information on routes and stops across Birmingham please visit:

<http://www.networkwestmidlands.com>

Canals

There is an extensive canal network around Birmingham. Canal towpaths can offer quick routes across the city. However, these routes can also be isolated, therefore we don't recommend students walking alone along canal routes. Canal and water safety should also be followed and at no point should students enter any water, play around locks or interfere with canal equipment or boats.

Cycling

AUEA has 34 dedicated cycle spaces for students. If your child wishes to cycle to and from AUEA, a cycle pass needs to be obtained. To obtain this pass, your child will have to demonstrate that they have a lock to use, and that a spare key for the lock is handed into the Academy, inside a labelled (child's name, College and Tutor) envelope. Students who are cycling also need to demonstrate that they use a cycle helmet. For information on West Midlands Cycle Hire, please visit www.wmcyclehire.co.uk/#how-to-ride

Student parking

Sixth Form students are not permitted to park at AUEA 1 or AUEA 2 on Lister street, this would risk their vehicle being clamped.

Scooters

E-scooters are being trialled in Birmingham however they are legal for over 18 year olds only with a provisional driving license. The scooters can only ride in places where people can ride bicycles such as roads and cycle lanes. They cannot be ridden on pavements.

E-scooters are legally available to purchase but it's currently against the law to ride a privately owned one in any public place in the UK. This includes roads, pavements, parks, within town centres or canal towpaths. Riding personal scooters risks having the scooter confiscated by police and destroyed.

Walking

Whether your child is cycling, walking from home, the bus stop or the train station, we understand the importance of their safety within a city. Students will be trained in personal safety and road safety as part of their induction into the Academy.

With the new crossings around campus and especially across James Watt Queensway, there should not be any need for students to use subways or underpasses. All students are required to register their mode of transport to and from AUEA, to allow us to monitor and group students into travel parties. Staff members are also commuting by public transport and will be around the city centre before and after school. If you have any specific concerns about a route or change mode of transport, please notify AUEA immediately.

Going offsite

Sixth Form Students can go offsite for lunch if they choose to. UTC Foundation Year, 10 and 11 students are not allowed off site at any point during the day, unless it is for an authorised appointment, enrichment activity, activities on Aston University Campus, or for Aston University Sports. Students must sign out at main reception and carry their ID with them. Parental consent will always be formally obtained prior to any off site activity outside of the campus area.

By Train

AUEA is within 20 minutes walk of: Snow Hill train/metro station and Moor Street Train station. It is 20 minutes walk from New Street Station.

Regular and easy communication between home and AUEA is a vital requirement to support the progress of your son or daughter and is even more imperative with our longer business hours. We welcome opportunities for parents to come into the Academy or to speak on the phone and our staff will always be available to help. AUEA has three branches for communication with home, underpinned by the Academy College system and Personal Development Team.

Main Reception	
Personal Development Tutor	Curriculum Areas
College Team	

Reception operates from 08:00-15:45 on Monday and Friday, 08:00-16:45 Tuesday-Thursday. Reception can be contacted via enquiries@aeua.co.uk or 0121 380 0570. To ensure that we can quickly and effectively deal with your enquiry, please clearly state your child's name and the enquiry/person you wish to make an appointment with. We will then arrange a meeting to suit both yourself and relevant member of staff.

Your child has a dedicated tutor with which they meet each day to review their learning, individual progress and targets. The tutor is responsible for supporting and tracking the overall academic progress of their tutees and is therefore the first point of call for information about your child. All our tutors have a teaching timetable and consequently the best communication method is email. You should expect to have a response within 48hrs. If this is not achieved please contact principalpa@aeua.co.uk and we will escalate. Please clearly state your child's name and the detail of your enquiry.

To contact your son/daughter's teacher or leader in a specific Curriculum Area, please use either email or phone. Staff details are found on the following page.

Reporting absence

You and your son/daughter have selected to come to a University Technical College to allow them to gain opportunities that they would not gain at a standard school. These additional opportunities and qualifications are only possible through students following a longer working day and one additional learning week each year. It is therefore imperative that students do not take any time off school. Holidays are not permitted in term time. Students wishing to observe official religious holidays should request leave via the authorised permission form. This is available from The Point.

Should your child become ill and is unable to attend AUEA, you should notify AUEA via the main reception telephone number and select option 1.



CONTACT STAFF

The academy is divided into six distinct curriculum areas: Engineering, Health, Business, Mathematics, English, and Social Science. Each area is led by a Curriculum Area Leader who brings subject expertise and strong leadership to their specialist pathway. These leaders are responsible for maintaining high academic standards, supporting student progress, and ensuring that teaching is effective and consistent. They oversee curriculum design and delivery, making sure it remains challenging, relevant, and aligned with both industry needs and the expectations of higher education. This ensures that students are prepared for the next stage of their academic or professional journey.

At AUEA, our Curriculum Area Leaders are pivotal in fostering a culture of high expectations, supporting teachers in delivering engaging and challenging lessons, and championing continuous professional development. They collaborate closely with students, parents, and staff to create a supportive and inspiring learning environment where every student is empowered to achieve their full potential.

Through their leadership, the curriculum areas are not only hubs of knowledge but also centres of creativity, critical thinking, and real-world application, preparing our students to excel in their future academic and professional careers.

To learn more about our dedicated Curriculum Area Leaders and wider staff team, please visit www.auea.co.uk or simply scan the QR code provided.



Scan QR Code to see all staff at AUEA.



WELCOME TO ENGINEERING

We are committed to inspiring and equipping future engineers through a rigorous, creative, and industry linked curriculum & opportunities. Our programmes emphasise technical excellence, problem-solving, and real-world application. We look forward to working with you in the shared pursuit of innovation, excellence, and meaningful global progress together.

Mrs K Byng
Director of Engineering
karen.byng@auea.co.uk

- > Design & Technology
- > Engineering
- > Product Design
- > Art and Design
- > T Level Engineering subjects

WELCOME TO HEALTH

We are here to inspire and prepare you for a future in health sciences through an exciting and hands-on curriculum connected to real-world careers. You'll develop strong scientific skills, problem-solving abilities, and practical experience that will set you apart from your peers. We can't wait to support you on your journey to making a real difference within the health industry.

Mr J Branch
Director of Health
john.branch@auea.co.uk

- > Biology
- > Physics
- > Chemistry
- > BTEC Applied Science
- > T Level Health subjects

WELCOME TO BUSINESS

Our diverse curriculum offers a blend of subjects that develop your understanding of the world from multiple perspectives; cultural, historical, economic, and physical. We are committed to fostering your skills in analysis, communication, and critical thinking, preparing you for success across a wide range of fields. We look forward to supporting your growth throughout your studies.

Mrs R Ghale
Director of Business
raj.ghale@auea.co.uk

- > Business Studies
- > Economics
- > T Level Business subjects

WELCOME TO SOCIAL SCIENCE

Our diverse curriculum offers a blend of subjects that develop your understanding of the world from multiple perspectives; cultural, historical, economic, and physical. We are committed to fostering your skills in analysis, communication, and critical thinking, preparing you for success across a wide range of fields. We look forward to supporting your growth throughout your studies.

Ms K Hyman
Curriculum Area Lead
klara.hyman@auea.co.uk

- > Modern Foreign Language
- > Religious Studies
- > PE
- > Social Skills

WELCOME TO MATHEMATICS

You will engage with a challenging and rewarding curriculum that sharpens your reasoning and analytical abilities. Our aim is to inspire a love of numbers and patterns, while equipping you with skills that are essential across many disciplines and careers. We are committed to supporting your progress every step of the way as you build confidence and mastery in mathematics.

Ms G Sutton
Curriculum Area Lead
gemma.sutton@auea.co.uk

- > Numeracy
- > Core Mathematics
- > Mathematics
- > Further Mathematics
- > Functional Skills Mathematics

WELCOME TO ENGLISH

Our curriculum immerses you in a rich variety of texts and ideas, encouraging you to explore language, literature, and communication from diverse perspectives. We are dedicated to developing your analytical thinking, creativity, and confident expression, equipping you with skills that open doors to many future paths. We look forward to supporting your journey and celebrating your progress.

Mrs G Peters-Clarke
Curriculum Area Lead
grace.peters-clarke@auea.co.uk

- > Literacy
- > English Language
- > English Literature
- > Functional Skills English

COMMUNICATION



Recognised as lead practice, our pastoral team know each student really well and how to support their needs.

We have highly sophisticated systems to support and monitor student welfare and safeguarding, including MyConcern for staff, and Sharp for students, both allowing instant raising of issues and swift response from our expert team. We foster a culture of openness where students feel safe, heard, and respected. Our approach ensures no concern is too small to be addressed with care and urgency.



MyChildAtSchool [MCAS] is a portal enabling parents to view their child's academic performance in real-time via a web browser. This facility allows exclusive access to the child's Attendance, Assessment and Behaviour whenever the parent/carer wishes.

As well as student performance data, the portal also provides general useful information about school such as the Academic Calendar and Announcements. In summary, MyChildAtSchool provides:

- Access to real-time Attendance, Assessment and Behavioural data
- An insight to parents on their child's schoolwork (homework topics etc.)
- Communication facilities to improve contact between parents and schools
- Instant access to Published Reports and Letters
- Option to purchase Items, join Clubs or book Trips

How to Log into MCAS

To login to the MCAS Parent Portal you will need to have a valid e-mail address registered. www.mychildatschool.com



MCAS Help guide

If you need any support scan the QR code to view the guide for My Child At School



Firefly keeps parents up to date with their child's progress and enables teachers to provide parents the resources they need to support learning outside the classroom.

With Firefly, parents can receive communication, news, updates and messages, book parents evenings, undertake online meetings and organise payments as well as, most importantly, track their child's learning. Student work and home learning are set as tasks on Firefly along with activities and assignments which parents are able to view daily. It is a live account of your child's day at AUEA.

It is extremely important that you access this on a regular basis and have regular conversations and dialogue with your child about their progress and attitude. This is an essential support process for your child and for AUEA.

How to log into Firefly



Tracking student progress

Find out more about how your child is doing at school.

Viewing your child's profile page

In the main navigation bar, select Your Children then select your child

Viewing your child's tasks

1. On your child's profile page, scroll down to the Tasks Set section and choose View All Tasks.
2. Use the filters and sorting to find the tasks you want to view.
3. Choose a task
4. Review the task history and the interactions between your child and the teacher.

QUESTIONS & ANSWERS

How can I contact my child at AUEA?

Contact with your child during the Academy day should always be via AUEA main reception on 0121 380 0570. For general enquiries please contact enquiries@uea.co.uk.

How do I contact staff at AUEA?

AUEA have invested in Microsoft Teams therefore all staff can be contacted directly. Telephone numbers and email addresses can be found on the Contact Details and Procedures page. Alternatively, please visit our website at <https://uea.co.uk/contact/contact-us>

Contact information for staff can be found on the Contact Details and Procedures page.

Will my child need to wear business dress on the first day?

Yes. Our high expectations start from day one. AUEA staff will be checking business dress rigorously on day one and supporting students to ensure they meet our expectations.

What do I do if my child has a medical appointment?

We encourage all appointments to be taken outside of academy hours. Where this is not possible, evidence of the appointment must be shown to the attendance officer prior to the appointment.

Does my child need to carry cash?

We discourage students from carrying larger amounts of cash. For dining we provide an electronic card system which means that students will be able to use the card to pay at the restaurant till for breakfast and lunch. The card can be topped up with credit, either by online payments, direct debit or cash machines in school. The additional advantage of this card system is that you can access your child's diet data, showing you what they have been spending their money on.

Can I get support for my child's meals?

If you currently receive Free School Meals (FSM) please complete the online form so that the information is forwarded to AUEA. <https://cloudforedu.org.uk/ofsm/birmingham>

Your child may be able to get free school meals if you get any of the following:

- Income Support
- Income-based Jobseeker's Allowance
- Income-related Employment and Support Allowance
- Support under Part VI of the Immigration and Asylum Act 1999
- The guaranteed element of Pension Credit
- Child Tax Credit (provided you're not also entitled to Working Tax Credit and have an annual gross income of no more than £16,190)
- Working Tax Credit run-on - paid for 4 weeks after you stop qualifying for Working Tax Credit
- Universal Credit - if you apply on or after 1 April 2018 your household income must be less than £7,400 a year (after tax and not including any benefits you get)

Children who get paid these benefits directly, instead of through a parent or guardian, can also get free school meals.

If you do not qualify for most benefits (also known as having 'no recourse to public funds'), your child may still be eligible for free school meals. Ask their school or local authority whether they're eligible.



Sixth Form

Tel: +44 (0)121 380 0570 / Admissions 0121 380 0572

Email: enquiries@co.uk

Web: www.co.uk

